



BHARGAVA PHYTOLAB
SINCE 1920

Product Portfolio

Spreading the joy of health







Aphrodisiac

Thunder-M (Tablets)



General Health

Appetiser (Syrup)
Ague Nil (Syrup)



Cardiovascular

Diacardiac (Drops)



Respiratory

Co-Ex (Syrup)
Coffit (Syrup)
Sinuset (Tablets)
Toniphib (Tablets)
Anacosinum (Pellets)



Central nervous

Deprotal-N (Tablets)



Urology

Anurise (Drops)
Kidflame (Tablets)
Renoaid (Tablets)
Prostorall (Tablets)



Dermatology

Angel Gloss (Cream)
Wartin (Drops)



Hepatology

Hepatina (Syrup)
Hepatina (Tablets)



Gynecology

Meniphib (Tablets)



Musculo-skeletal

Artharal (Tablets)
Arnica (Gel)
ArniGo (Gel)
Spondin (Drops)
Spondin (Spray)
Rhomo Oil



**Gastro Intestinal/
Digestive System**

Aciset (Syrup)
Gas Off (Tablets)
Piloral (Tablets)



Pediatric

Cold Care (Ampules)
Colic Care (Ampules)
Infab (Syrup)
Kiddy Calm (Ampules)
Kin-Tu (Syrup)
Teeth Easy (Ampules)



Syrup

Aciset	1
Appetiser	2
Ague Nil	3
Co-Ex	4
Coffit	5
Hepatina	6
Infab	7
Kin-Tu	8



Tablets

Artharal	9
Deptoral-N	10
Gas Off	11
Hepatina	12
Kidflame	13
Meniphib	14
Piloral	15
Prostoral	16
RenoAid	17
Sinuset	18
Thunder-M	19
Toniphib	20



Drops

Anurise	22
Diacardiac	22
Spondin	23
Wartin	24



Creams

Angel Gloss	25
-------------	----



Oil

Rhomo Oil	26
-----------	----



Pellets

Anacosinum	27
------------	----



Gels

Arnica	28
ArniGo	29



Ampules

Cold Care	30
Colic Care	31
Kiddy Calm	32
Teeth Easy	33



Aciset

Natural remedy to
Digestive issues



INDICATIONS

- Hyperacidity
- Indigestion
- Loss of appetite

INGREDIENTS

Alumina, Magnesia carbonica, Calcarea carbonica, *Carica papaya*, *Gentiana lutea*, *Robinia*, *Nux vomica*, *Embelia officinalis*, *Chirata*, *Cinchona officinalis*, *Aegle marmelos*

Due to increasing inclination of people towards consuming fatty or spicy food items, addictive habits of smoking and alcohol, sedentary and stressed lifestyles, nowadays one fifth percentage of any groups suffers from stomach acidity and indigestion.

SYMPTOMS

- Fullness during or after a meal.
- Nausea & vomiting.
- Burning in stomach or upper belly.

Aciset is an effective antacid and a digestive aid which smoothens and normalizes the digestion process, thus helping to promote proper assimilation, digestion and elimination of food.

MECHANISM OF ACTION

- Aciset reacts with excess acid in the stomach reducing acidity of the stomach which can lead to ulcers, heartburn, dyspepsia, gastric complaints-pain in the abdomen.
- Stimulates the secretion of saliva in mouth.
- It breaks down tough protein fibres making it useful in digestion, gastritis and other digestive problems.

DOSAGE

Children above 6 year: Half teaspoon,
Adult & children above 12: One tablespoon,
Three times a day.



Appetiser

Natural appetite stimulant tonic



INDICATIONS

- Increases appetite
- Tones up digestion
- Fights dyspepsia and aversion to food
- Carminative and laxative action

INGREDIENTS

Abies nigra, Carduus marianus, Quassia amara, Hydrastis canadensis, Cinchona officinalis, Alfalfa, Gentiana lutea, Five Phos.

Starving your body of food and losing weight stops your body's organs working properly. It can damage your heart, kidneys, digestion, bones, muscles. A decreased appetite is when you have a reduced desire to eat. The medical term for a loss of appetite is anorexia.

SYMPTOMS

- Aversion to eat or drink
- Loss of body weight
- Alteration of pulse rate
- More vulnerable to infections

Appetiser is an appetite stimulant syrup from Bhargava Phytolab which is comprised of ingredients from natural source and provides a natural care to the well being.

MECHANISM OF ACTION

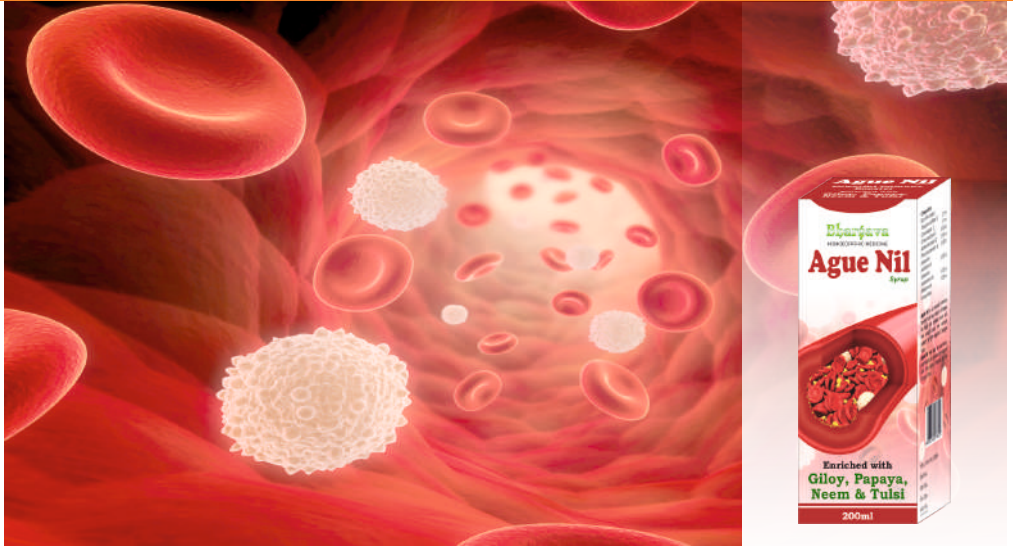
- The active ingredients of the Appetiser syrup include bitter chemicals such as secoiridoids and amarogentin which increase appetite by stimulating the production of saliva, gastric secretion including stomach acid and pepsin.
- Appetiser increases the bile flow, an alkaline compound which aids in digestion via the emulsification of lipids stimulated secretion of small intestinal enzymes.
- Increases the flow of digestive enzymes and is considered as an effective syrup for improving overall digestion and easing disorders of the digestive tract.

DOSAGE

For adults and children over 12 years old: One tablespoon (15 ml),

For children of 6 to 12 years old: One teaspoon (5 ml),

For children of 2 to 6 years old: Half teaspoon (2.5 ml),
Three times a day



Ague Nil

Platelet & immunity booster



INDICATIONS

- Increases platelet count
- Prevention and management of Dengue Fever

INGREDIENTS

Tinospora cordifolia, Carica papaya, Ocimum sanctum, Azadirachta indica, Rhus toxicodendron, Eupatorium perfoliatum, Gelsemium sempervirens, Belladonna

Dengue fever, which also known as break-bone fever, is a viral infection, transmitted by the bite of an infected female mosquito, *Aedes Aegypti*. Dengue can affect anyone but tends to be more severe in people with compromised immune systems.

SYMPTOMS

- Joints and muscle pain
- Fever
- Skin rashes
- Weak ness

Ague Nil syrup boosts the immune power of persons by increasing WBC and PLATELET count to fight with Dengue virus and thus can be used for prevention and management of Dengue Fever.

MECHANISM OF ACTION

- Strong immuno stimulant, increases white blood cells (WBC) and platelet count.
- High in complex vitamins that rapidly increases blood platelet production.
- It has analgesic, antipyretic and anti-inflammatory effects in acute & chronic fever.
- Treats joint pain, fever, headache, soreness of eyeballs, backache with nausea & vomiting.

DOSAGE

For Prevention:

For Adult: One tablespoonful two times a day, for a week.

For Children - One teaspoonful two times a day, for a week.

For Management :

One tablespoonful three to four times a day or as directed by the physician.



Co-Ex

3 in 1 action to relieve cough
Anti-tussive, mucolytic, expectorant



INDICATIONS

- Dry and wet cough
- Cough associated with bronchitis
- Cough associated with asthma
- Irritation in throat

INGREDIENTS

Justicia adhatoda, Aspidosperma quebracho, Yerba santa, Ipecacuanha, Passiflora incarnata

Colds generally do not cause serious complications, but they are among the leading reasons for visiting a doctor and for missing school or work. Prolonged coughing can cause unpleasant side effects, such as chest pain, exhaustion, light-headedness, and loss of bladder control. Coughing also can interfere with sleep, socializing and work.

SYMPTOMS

- Sore throat
- Wheezing & shortness of breaths

Co-Ex syrup from Bhargava Phytolab is an ultimate cough reliever without sedation. It consists of ingredients from plant source and hence safe for ingestion.

MECHANISM OF ACTION

- Co-Ex possess anti-tussive & bronchodilatory action they work by increasing the levels of a chemical called GABA in the brain. GABA lowers the activity of some brain cells, making a person feel more relaxed.
- It works by signaling the body to increase the amount or hydration of secretion, resulting in more recreations and as a byproduct lubricating the irritated respiratory tract.
- It dissolves thick mucus & help relieve respiratory difficulties.
- Bronchodilatory action dilates the bronchi and bronchioles decreasing resistance in the respiratory airway and increasing airflow to lungs.

DOSAGE

For Children 4 to 12 years: One teaspoonful measure (5ml),

For 12 years and older: One tablespoonful measure (15ml),
Three times a day.



Coffit

Chesty cough relief



INDICATIONS

- Chesty cough relief
- Loosen mucus & phlegm

INGREDIENTS

Ivy leaf extract (*Hedera helix*)

Cough is a highly prevalent condition and a common reason for consultations in general practice. Most frequently, cough symptoms are caused by acute viral upper respiratory tract infections (URTIs). With chesty cough (wet, productive or phlegmy) your chest feels heavy and you may cough up mucus or phlegm. A chesty cough may follow a sore throat or a cold and can be worse in the morning.

SYMPTOMS:

- Cough with green or yellow mucus
- Shortness of breath
- Chest pain or discomfort

Coffit Cough Syrup is a natural medicine for chesty cough. Ivy Leaf is best known to treat inflammatory bronchial conditions. Coffit syrup is enriched with benefits of Ivy Leaf.

MECHANISM OF ACTION:

- Coffit cough syrup thins out the mucus in the lungs to relieve chesty, wet coughs. It also helps improve breathing and reduces coughing episodes.
- Ivy leaf in Coffit syrup contains saponins which are considered to have mucolytic, spasmolytic, bronchodilatory and antibacterial effects.
- Coffit syrup widens the bronchi in lungs and make airways clearer.

DOSAGE

Infants and small Children(1-5 years)-2.5ml
 Children 5-12 years-5ml
 Children & Adults (>12 years)-15ml
 3 times daily



Hepatina

Natural liver tonic



INDICATIONS

- Viral hepatitis
- Fatty liver disease
- Alcoholic liver disease
- Jaundice

INGREDIENTS

Carduus marianus, Chelidonium majus, Andrographis paniculata, Taraxacum officinalis, Ipecacuanha

The liver is the largest glandular organ in the body performing many vital functions to keep the body pure of toxins and harmful substances. The liver produces a substance need to digest fats. Bile salts break up fat into smaller pieces so it can be absorbed more easily in the small intestine.

SYMPTOMS

- Abdominal pain
- Loss of appetite
- Dark urine
- Yellowing of skin & eye
- Nausea & Vomiting

Hepatina is a proprietary blend of plant based minerals, antioxidants and other important natural active compounds that enhance healthy liver function. **Hepatina** promotes proper metabolic function including nutrient absorption.

MECHANISM OF ACTION

- Hepatina has regenerative capability elicited by andrographolide which activates liver function enzymes catalyzing the reaction of several biochemical and synthetic processes.
- Hepatina is protective against different hepatotoxins. Hepatina is a hepatostimulative agent improving glycogenolysis in liver.
- Induces secretion of the bile to aid digestion & emulsification a fat.

DOSAGE

Children : One teaspoonful,

Adults: One tablespoonful,

Three times a day or as directed by your medical or health care practitioner.



Infab

Soothe your little one's teething troubles



INDICATIONS

- Enables smooth and easy dentition
- Promotes both mental and physical growth
- Prevents as well as relieves diarrhoea/constipation, colic, flatulence and indigestion
- Boosts up the immune system, so gives resistance to fight infection

INGREDIENT

Cina, Kalmegh, *Carica papaya*, *Chamomila*, Anisum can, Five Phos.

Teething is a very natural process and a milestone in baby's development. Babies sometimes are lucky not to face any problems while teething. Low grade fever, less sleep, awaking several times at night, refusing food is the common problems for teething babies.

SYMPTOMS

- Red flushed cheek or face
- Ear rubbing on the same side as the erupting tooth
- Sleepless at night
- The baby might not be feeding well
- Gum rubbing

Infab is a natural tonic composed of herbal extracts. It relieves the symptoms of teething and regulates the immune system of the body. Teething is a painful and tough time for infants where **Infab** is suitable and recommended choice for a child to combat teething troubles and enhance immunity.

MECHANISM OF ACTION

- Infab inhibits cox-2 thereby preventing prostaglandins, the biosynthesis of PGs and hence relieves signs of inflammation like pain, swelling and fever.
- Infab contains hetro polysaccharides, which normalize the immune response and increase the sensitivity of T-cells (helper cells), type of white blood cells, that play an important role in the immune system.
- Infab promotes tissue building & provide necessary nutrition. Restore health by removing mineral imbalances in the body.

DOSAGE

Children:

Up to 1 year: Half teaspoonful (2.5ml),

Above 1 year: One teaspoonful (5 ml),

With water or milk two times a day or as directed by your medical or healthcare practitioner.



Kin-Tu

Natural cough reliever
for kids



INDICATIONS

- Dry cough & Wet cough
- Alleviates cold symptoms

INGREDIENTS

Antimonium tartaricum, Byronia alba, Coccus cacti, Drosera rotundifolia, Ipecacuanha, Pulsatilla nigricans, Rumex crispus, Spongia tosta, Sticta pulmonaria.

A child's little body can make a big sound when wracked with cough.

A cough is usually a sign your child's body is trying to rid itself of an irritant, from mucus to a foreign object.

SYMPTOMS

- Coughing
- Runny nose
- Low fever
- Nausea & Vomiting

Kin-Tu syrup from Bhargava Phytolab provides a natural cough care for children. It has benefits of honey which has a sweet taste, causes salivation. Thinned mucus reduces the urge to cough.

MECHANISM OF ACTION

- It helps in clearing the accumulated mucus in the air passage during bronchitis attacks and dyspnoea. Acts on hoarseness, burning sensation in chest and difficulty breathing.
- Indicated for kids that suffer from spasmodic cough attacks late in the night or early morning.
- Acts on mucous membranes and lungs. It relieves dry, hacking cough accompanied by hoarseness and chest pain.

DOSAGE

Children from 1 to 11 years: 5ml orally, using the pre-measured cup provided, Three times a day.
Reduce with improvement.



Artharal

Preserve youth & mobility of joints



INDICATIONS

- Predisposition of arthritis
- Arthritis in remission
- Arthritis in the exacerbation phase (as an adjuvant therapy with NSAIDs)
- Podagra (gout arthritis)

INGREDIENTS

Ferrum phosphoricum, Lithium carbonicum, Natrum sulphuricum, *Nux vomica*, *Rhododendron*, *Rhus toxicodendron*

Arthritis refers to an inflammation of a joint or joints in the body. Current conventional medical treatment often cannot provide much assistance for people living with the chronic pain and debilitating effects of arthritis.

SYMPTOMS

- Joint pain
- Swelling
- Stiffness
- Difficulty moving a joint

Artharal is an effective natural remedy for arthritis and other complications which restrict the movement of joints.

MECHANISM OF ACTION

- Artharal causes disintegration of the leukocytes, reducing joint capsule membrane inflammation.
- Increases blood flow to the inflammation areas to speed up healing and restore cartilage destruction.
- Artharal inhibits the formation of xanthine oxidase activity which is responsible for higher production of uric acid in the body which cause inflammation in the synovium membrane of the joints.

DOSAGE

Adults: Two tablets,

Three times a day or as prescribed by your medical or healthcare practitioner.



Deprotal-N

Battle the stress you handle every day



INDICATIONS

- Calming formula eases stress & anxiety.
- Relieves mental exhaustion & uplifts the mood.

INGREDIENTS

Aconitum napellus, Atropa belladonna, Avena sativa, Chamomilla officinale, Ferrum phosphoricum, Magnesium phosphorica, Passiflora incarnata

Depression is an emotional disorder depicting feelings of low spirits, hopelessness, helplessness, guilt, anguish, despair, tearfulness, headaches and dizziness, fluctuation of blood pressure, decreased mental and motor activity.

SYMPTOMS

- Fatigue, lack of energy
- Anxiety, agitation, irritability
- Insomnia or oversleeping
- Difficulty concentrating and complaints of poor memory

Deprotal-N is a natural medicine, intended for treatment of mild to moderate depression, to relieve seasonal affective disorders, mood swings and anxiety related to various factors, including the climacteric syndrome. It also helps with episodic headaches and tension.

MECHANISM OF ACTION

- Deprotal-N acts mildly on the human body and has a positive effect on the functional state of the central and autonomic nervous system.
- It has psycho energizing, antidepressant and calming effects. It promotes good mood, normalization of sleep, increases mental and physical activity.

DOSAGE

Adults: Two tablets, Two times a day or as directed by the physician or natural health practitioner.



Gas Off

Optimal solution for digestion issues



INDICATIONS

- Heartburn
- Abdominal distention
- Dyspepia

INGREDIENTS

Aluminum hydroxide, Bismuth carbonicum, *Carica papaya*, *Lycopodium clavatum*, Magnesium hydroxide, Natrum bicarbonicum

Having gas is common, it can be extremely uncomfortable and embarrassing sometimes. Gas in the digestive tract is usually caused by swallowing air and by the breakdown of certain foods in the large intestine by bacteria.

SYMPTOMS

- Fullness during or after meal
- Nausea & vomiting
- Abdominal bloating
- Belching & gas

Gas Off is especially formulated to relieve intestinal gas, abdominal bloating, acid indigestion and heartburn.

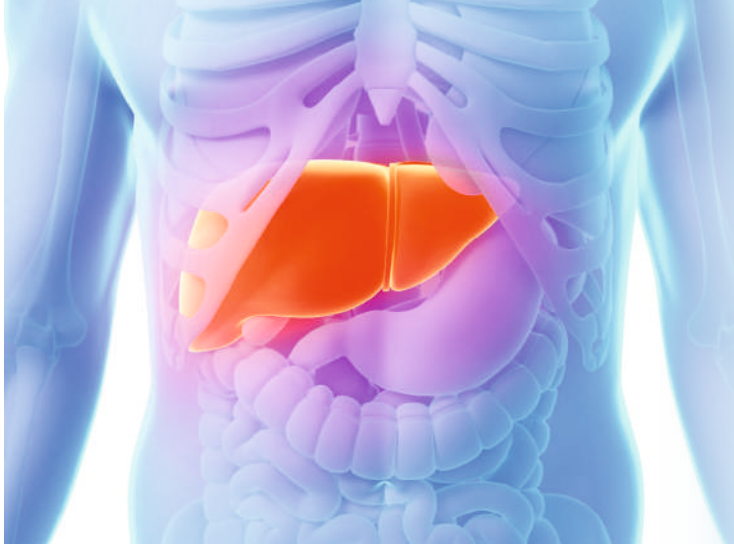
MECHANISM OF ACTION

- Gas off releases the proteolytic enzymes - papain and chymopapain in the stomach which helps in digesting proteins, fats and carbohydrates of food.
- Gas off contains antacids and Bismuth carbonicum which help in reducing the production of excessive acid and prevent inflammation of the esophageal and stomach lining.

DOSAGE

Adult & Children over 12 years: One tablet,

Children 6 to 12 years: Half tablet,
Two times a day.



Hepatina

Natural care
for liver



INDICATIONS

- Viral hepatitis
- Fatty liver disease
- Alcoholic liver disease
- Jaundice

INGREDIENTS

Carduus marianus, Chelidonium majus, Andrographis paniculata, Hydrastis canadensis, Taraxacum officinale, Podophyllum peltatum, Ipecacuanha,

The liver is the largest glandular organ in the body performing many vital functions to keep the body pure of toxins and harmful substances. The liver produces a substance need to digest fats. Bile salts break up fat into smaller pieces so it can be absorbed more easily in the small intestine.

SYMPTOMS

- Abdominal pain
- Loss of appetite
- Dark urine
- Yellowing of skin & eye
- Nausea & Vomiting

Hepatina is a proprietary blend of plant based minerals, antioxidants and other important natural active compounds that enhance healthy liver function. **Hepatina** promotes proper metabolic function including nutrient absorption.

MECHANISM OF ACTION

- Hepatina has regenerative capability elicited by andrographolide which activates liver function enzymes catalyzing the reaction of several biochemical and synthetic processes.
- Hepatina is protective against different hepatotoxins. Hepatina is a hepatostimulative agent improving glycogenolysis in liver.
- Induces secretion of the bile to aid digestion & emulsification of fat.

DOSAGE

Adult and children above 12 years : One tablet,
Children from 6 to 12 years : Half tablet,
Three times a day



Kidflame

On guard of your kidney health



INDICATIONS

- Pyelonephritis
- Cystitis
- Urolithiasis

INGREDIENTS

Berberis vulgaris, Stigmata maydis, Cantharis vesicatoria, Thuja occidentalis, Dioscorea villosa, Uva ursi, Petroselinum sativum, Vesicaria communis.

The kidneys are the organs that serve several essential regulatory roles in organism. They are the essential part of the urinary system serving homeostatic functions. They also serve the body as a natural filter of the blood, removing wastes which are diverted to the urinary bladder. The inflammation of kidneys may lead to severe problems. It is necessary to take care of your kidney health.

SYMPTOMS

- Discomfort / Pain while passing urine
- Passing urine frequently
- Pain in lower back

Kidflame is a natural approach to resolve your kidney problems. It is composed of natural ingredients and hence it is safe for ingestion and does not have any known side effects.

MECHANISM OF ACTION

- Kidflame has a lithotriptic property which means it helps to breakdown the stones into smaller parts which are easy to pass out through urine.
- Kidflame maintains the pH balance of urine to inhibit the aggregation of salts and prevents stone formation.
- Kidflame as a Diuretic increase the flow of urine and help stone pass easily it also has antioxidant properties which prevents free radical damage to urinary tract.

DOSAGE

Children above 12 years: One tablet,

Adults: Two tablets,
Three times a day.



Meniphib

Nature's perfect regulator for eve's menstrual and mammary discomforts.



INDICATIONS

- Painful cramps
- Heavy bleeding
- Absence of menstruation and light menstruation
- Premenstrual symptoms
- Mastopathy

INGREDIENT

Agnus castus, Caulophyllum thalictroides, Cyclamen europaeum, Ignatia amara, Iris versicolor, Lillium tigrinum

Hormones play an important role in every woman's life. They influence all aspects of life from puberty, pregnancy & birth to the menopause. The female hormones trigger all the changes in the body and imbalance in these hormones may lead to gynecological problems.

SYMPTOMS

- Discomforts due to PMS (Premenstrual Syndrome)
- Menstrual irregularities

Meniphib tablet is a natural approach to combat females discomfiting situation of menstrual and mammary disturbances.

MECHANISM OF ACTION

- The herbs present in Meniphib tablet act on hypothalamus and increase production of Luetinizing hormone and Progesterone which regulate menstrual cycle and relieve menstrual irregularities.
- Meniphib acts on pituitary gland and inhibits the release of Follicle stimulating hormone.
- Meniphib reduces the level of Prolactin and resolves following condition hyperprolactenemia, infertility and loss of libido.
- Meniphib tones and strengthens the uterine and pelvic muscles, provides relief in pain during menses.

DOSAGE

Female above 18 year: One tablet, Two times a day.



Piloral

A natural remedy to treat
Piles



INDICATIONS

- Painful, bleeding or non-bleeding hemorrhoids
- Protruding hemorrhoids due to obstinate constipation
- Pain, soreness, burning, and itching of the anal area due to internal as well as external hemorrhoids

INGREDIENTS

Aesculus hippocastanum, Hamamelis, Aloe socotrina, Millefolium, Collinsonia canadensis, Scrophularia

Pain around the anus is becoming a big problem this excruciating pain would continue for hours after passing stool. Patient at times face difficulty in concentrating at his job, as the pain would go on for hours and an uncomfortable feeling will always be there. This condition is known as Hemorrhoids or Piles.

SYMPTOMS

- Rectal itching
- Intense pain while passing stools
- Feeling of something bulging out from anus
- Bleeding

To treat the conditions of piles Bhargava Phytolab brings to you Piloral tablet which consists of natural ingredients and hence safe for ingestion.

MECHANISM OF ACTION

- Piloral decreases the venous pressure and cures the varicose conditions of hemorrhoidal vein
- Extracts of plants present in Piloral prove beneficial in keeping the vein walls healthier and hence prevent the problem of piles.
- Flavonoids, saponin and aescin present in Piloral tablets reduce bleeding and swelling.
- Piloral's astringent action is efficient in curing burning sensation and pain.

DOSAGE

One tablet,
Three time a day.



Prostorol

Men's health for long years to come



INDICATIONS

- Prophylaxis of Benign prostatic
- Recurrent urinary tract infections hyperplasia
- Functional disorders in urination due to BPH (dysuria)
- Frequent urination (pollakiuria)

INGREDIENTS

Chimaphila umbellata, Ferrum picricum, Hydrangea, Pareira brava, Sabal serrulata, Staphysagria, Thuja occidentalis

Prostate enlargement happens to almost all men as they get older. As the gland grows, it can press on the urethra and cause urination and bladder problems. This enlargement leads to a disease called Benign Prostate Hyperplasia (BPH).

SYMPTOMS

- Need to urinate frequently
- Stopping and starting while urinating
- Urinating frequently at night (nocturia)
- Dribbling after urination ends
- Being unable to empty your bladder

Prostorol is a herbal effective remedy for BPH, Prostatitis and its associated symptoms treatment. It is completely safe, as it constitutes of all natural remedies regulating the normal hormonal functioning of the Prostrate gland.

MECHANISM OF ACTION

- Prostorol possesses 5-alpha reductase inhibitor activity which inhibits the formation of DHT from testosterone.
- Prostorol blocks the site of androgen receptor and hence prevents the binding of DHT to it which further inhibits the cell proliferation.
- Prostorol exhibits anti-inflammatory effects which help to relieve the associated symptoms.
- Anti-proliferative action of Prostorol arrests the unnecessary growth of prostate gland.

DOSAGE

Adults: One tablet, Three times a day.



RenoAid

Urinary tract health



Tablets

INDICATIONS:

- Recurrent UTI and associated bladder infections
- Urinary pain relief
- Supports Kidney & Bladder performance

INGREDIENTS

High Cranberry (*Viburnum opulus*), *Berberis vulgaris*, *Cantharis*, *Dioscorea villosa*, *Petroselinum sativum*, *Stigmata maydis*, *Thuja occidentalis*, *Uva ursi*, *Vesicaria communis*

Presence of inflammatory cells or pathogens in urine indicate a urinary tract infection (UTI). Bladder infection (cystitis) is caused by bacteria rising through the urinary tract and inducing inflammation of the mucous membranes of the bladder. Women are most commonly affected, as their urinary tracts are much shorter than those of men. UTI is common in men when urinary obstruction due to prostatic hypertrophy may occur.

SYMPTOMS:

- Abrupt onset of frequency of micturition
- Painful micturition
- Urine that may appear cloudy & have an unpleasant smell
- High fever and chills

RenoAid is a natural and effective way to provide relief in inflammatory conditions of Urinary Tract and Urinary Bladder

MECHANISM OF ACTION:

- RenoAid antimicrobial effect appears to be in part because of its capacity to change the microbial cell surface characteristics. RenoAid increases the hydrophobicity of the microbial cell surface, decreasing the ability of bacteria to adhere to the host.
- RenoAid prevent UTIs, especially recurrent urinary tract infections (rUTIs) by inhibiting adhesion. Anthocyanidins and proantho-cyanidins in RenoAid protect from infection through their anti-adhesion properties.
- RenoAid is a potent diuretic helping bacteria to flush out by increasing the urine outflow it also possess astringent effect which soothes the urinary tract and reduces burning sensation.

DOSAGE:

Adult & Children above 12years: 1 tablet three times a day.



Sinuset

Feel the freedom
to breathe!



INDICATIONS

- Sinus congestion
- Nasal congestion & recurrent sneezing
- Respiratory tract inflammation

INGREDIENTS

Asafoetida, Lycopodium clavatum, Pulsatilla nigricans, Sticta pulmonaria, L. emna minor, Echinacea purpurea, Sambucus Nigra, Armoracia Sativa

Sinusitis means your sinuses are inflamed. The cause can be an infection or another problem. Sinuses are hollow air spaces within the bones surrounding the nose. They produce mucus, which drains into the nose. If your nose is swollen, this can block the sinuses and cause pain. Acute sinusitis often starts as a cold, which then turns into a bacterial infection. Allergies, nasal problems, and certain diseases can also cause acute and chronic sinusitis.

SYMPTOMS

- Facial pain/pressure
- Nasal stuffiness
- Nasal discharge
- Loss of smell
- Cough/congestion

Sinuset tablet is a herbal treatment for sinusitis and related problems.

MECHANISM OF ACTION

- Sinuset has a high content of mucilage, silicic acid and saponins, all of which contributes to its efficacy in a treatment of upper respiratory problems.
- Sinuset acts as an antibiotic, active against a variety of bacteria, so this can benefit in treating sinus infection.
- Sinuset also acts as a respiratory stimulant and expectorant to release phlegm and relieve chest congestion.
- The thick mucus is rapidly dissolved, the swelling of the mucous membranes is reduced, you can breath freely again.
- Sinuset stimulates phagocytosis significantly and enhance natural killer cell activity.

DOSAGE

Children: One tablet,

Adult: Two tablets,

Three times a day or as directed by the physician.



Thunder-M

A non-hormonal stimulant of male reproductive function



INDICATIONS

- Low sperm count
- Abnormal production of sex hormone
- Low sperm quality
- Lack of libido and erectile function

INGREDIENTS

Damiana, Acid Phos, Ginseng, Selenium, Yohimbinum

Male sexual arousal is a complex process that involves the brain, hormones, emotions, nerves, muscles and blood vessels. Erectile dysfunction can result from a problem with any of these. Likewise, stress and mental health concerns can cause or worsen erectile dysfunction.

SYMPTOMS

- Sperm production problem
- Sexual problems (erection & ejaculation)
- Reduced sexual desire

Thunder-M is an effective and long acting medication for treating male impotence. Constituted from all naturally occurring remedies it successfully prevents and treats sexual debility, abnormal and weak erections, thus removing the barrier to healthy sex life.

MECHANISM OF ACTION

- Stimulates the production of sperm in testicles (male gonad) and increases sex drive by increasing testosterone production. It increases testosterone production by inhibiting the enzyme aromatase (the enzyme that converts testosterone to estrogen).
- Maintain penile rigidity to overcome erectile dysfunctions by regulating the release of NO (Nitric oxide) and NE (Nor epinephrine).

DOSAGE

Adults: One tablet,
Two times a day or as directed by the physician.



Toniphib

Supports your immunity



INDICATIONS

- Increases immune system efficiency
- Prophylaxis & treatment of Cold & Flu
- As an adjuvant therapy to long-term anti-infective treatment accompanied with decrease of immunity response

INGREDIENTS

Althea officinalis, Chamomilla, Equisetum hyemale, Juglans Regia, Millefolium, Quercus glandium spiritus, Taraxacum officinale

We all get colds, whether it is spring, summer, fall or winter. Colds may be more common during "cold and flu season", but they circulate year round and can make you sick any time. The common cold and flu is a viral infectious disease of the upper respiratory tract. A person with weak immune system can catch cold easily.

SYMPTOMS

- Fever
- Sore throat and cough
- Sneezing
- Fatigue
- Body aches

Toniphib tablets from Bhargava Phytolab is a natural healing remedy to support immunity & treat cold and flu, it is made up of components which are originated from plant source.

MECHANISM OF ACTION

- Anti-allergenic relieves symptoms associated with sneezing and running nose. Immuno-modulatory activity enhance the total white blood cell count helps fight against infections.
- Antioxidant & anti-inflammatory activity strengthens the immune system.

DOSAGE

Adults and children above 12 years old:

- One tablet,
- Two times a day for prophylaxis purpose.
- Two tablets,
- Two times a day for treatment purpose.



Anurise

Dry bed in the morning is a great start of the day!



INDICATIONS

- Nocturnal and day time Enuresis
- Recurring bladder infections
- Interstitial cystitis
- Symptomatic treatment of conditions associated with urinary incontinence

INGREDIENT

Hypericum perforatum, Verbascum thapsus, Atropa belladonna, Rheum officinalis, Glycerinum

Everyone is a born bedwetter. As one grows older, the brain continually develops so that by the age 5-6 years, full control of the bladder is attained in the majority. However, this process takes a longer time, hence enuresis. About 2-3% of male and female adults that are older than 18 years of age also suffer the problem. It can also occur at older age due to urinary bladder muscle weakening.

SYMPTOMS

- Involuntary leakage of urine and associated urinary tract and bladder infections

Anurise is a phytotherapeutic approach to solve the problem of Urinary incontinence (UI), any involuntary leakage of urine.

MECHANISM OF ACTION

- Anurise has bladder tonifying action, it strengthens and improves the tone of trigone muscles. It brings more control over the pelvis muscle to regulate the release of urine.
- Anurise has a urine control action by which it increases the volume of urination and decreases the frequency of urination, leakages and involuntary dribbling.
- Anurise also possesses anti-inflammatory, anti-catarrrhal, astringent action and reduce inflammation in the mucosa of the bladder.

DOSAGE

Children: 5-10 drops,
Adults: 15-20 drops,
 With water two times a day.



Diacardiac

Dependable
cardio protector



INDICATIONS

- Arrests the pace of Atherosclerosis by regulating the cholesterol levels
- Improves overall function of cardiovascular system
- Relieves anxiety, palpitation, sinking heart and hypertension

INGREDIENTS

Cactus grandiflorus, Crataegus oxyacantha, Strophanthus, Camphor, Valeriana officinalis, Aurum muriaticum natronatum.

Heart and blood vessel disease is a cardiovascular disease also called heart disease. It includes numerous problems, many of which are related to a process called atherosclerosis. Atherosclerosis is a condition that develops when a substance called plaque builds up in the walls of the arteries. This buildup narrows the arteries making it harder for blood to flow through. If a blood clot forms, it can stop the blood flow. This can cause a heart attack or stroke.

SYMPTOMS

- Anxiety
- Chest discomfort
- Weakness
- Swelling
- Sweating
- Shortness of breath

Diacardiac ensures the proper cardiac functioning and acts vigorously upon the muscular structure of the heart. Diacardiac increases the contractile power of all striped muscles, increases the musculo-motor energy of the heart, elevates arterial tension, increasing the height and force of the pulse wave leading to efficient heart action.

MECHANISM OF ACTION

- Antagonizes the increases in cholesterol, triglycerides and phospholipids in low-density lipoprotein (LDL) and very-low density lipoprotein (VLDL) and thus inhibits the progression of atherosclerosis.
- Contains flavonoids (Proanthocyanidins & oligomeric proanthocyanidines). Proanthocyanidins inhibit the progression of atherosclerosis and show significant antioxidant activity. The oligomeric proanthocyanidines produce the arterial relaxation and dilatation, particularly of the coronary arteries.

DOSAGE

Adults: Take 15-30 drops in half cup of water three times daily; for sudden symptoms- single dose of 50 drops in half cup of lukewarm water; or as prescribed by the physician.



Spondin

Freedom from neck & shoulder pain



INDICATIONS

- Neck & pain between shoulders
- Vertigo & headache
- Pain, numbness & stretching sensation in nape of neck, radiating to shoulders, arms & fingers
- Cramps, jerking, twitching and shortening of muscles

INGREDIENTS

Colocynthis vulgaris, Ruta graveolens, Ledum palustre, Cuprum metallicum, Dulcamara, Conium maculatum.

Cervical spondylitis is a common spine problem refers to an inflammation of the vertebral joints pertaining to cervical area which primarily affects the axial skeleton, peripheral joint & extra-articular structures. It may lead to cervical disc problem or nerve compression.

SYMPTOMS

- Neck pain and shoulder pain
- Neck stiffness, particularly after a night rest
- Radiating pain from neck to arms on both side or back of head
- Headache
- Numbness of hands
- Morning vertigo

Spondin offers a comprehensive & effective treatment of the problem. It contains ingredients derived from natural sources to give quick relief from symptoms of cervical spondylitis, thus helps in maintaining the usual activities & prevents permanent injury to spinal cord and nerves.

MECHANISM OF ACTION

- Spondin contains flavonoids such as luteolin, rutin, quercetin and genistein. These flavonoids inhibit the release of histamine and block the production of IL-1*, IL-6*, IL-8, IL-12 and TNF- α * which are responsible for activation of inflammation. Spondin has strong antioxidant properties and supports the repair of blood vessels.
- Spondin contains hyperforin and hypericin which raise the release of neurotransmitters (dopamine, norepinephrine, and serotonin) that modulate brain signals between cells and play an important role in the optimal functionality of our nervous system.

DOSAGE (Drops)

Adults: 10-15 drops in half cup of lukewarm water three times a day.

Children: Half the adult dose or as directed by the physician

DOSAGE (Oral Spray)

Adults: 4 to 5 sprays 3 times a day

Children above 6: Half the adult dose or as directed by the physician.



Wartin

Natural remedy
for warts



INDICATIONS

- For all types of warts: Common, plantar, flat warts, filliform and genital
- Other skin growths like excrescences (enlarge-ment) / condylomata (growth on genitals)
- The growths located anywhere on body with or without oozing of moisture or blood

INGREDIENTS

Antimonium crudum, Causticum, *Dulcamara*, Natrum sulphuricum, Nitricum acidum, *Staphysagria*, *Thuja occidentalis*

Warts, which are caused by the human papillomavirus, are incredibly common. They aren't serious but they can sometimes be uncomfortable (depending on where they are) and embarrassing for older children and adults.

SYMPTOMS

- Fleshy pain less growth on the skin
- Small growth on skin or itchiness

If one goes to the doctor seeking a wart removal treatment they will be faced with very few options. Wart removal options offered are almost always painful, invasive, cause scarring, and are traumatic. Keeping all this in mind Bhargava Phytolab brings you wartin drops, a complete natural solution to fight off warts.

MECHANISM OF ACTION

- Gamma-delta T-cells in the blood are the first line of defense against many types of viral and bacterial infections. Thujone is as an effective wart removal remedy compound in *Thuja occidentalis*, which is the main component of Wartin drops. It stimulates the CD4 T-cells and thus helps in removal of warts and corns.
- The T-cells prompt the secretion of interferon, a key part of the body's chemical defense against infection. If you boost this part of the immune system, it can protect against infection thus demonstrating its value in wart removal treatments.
- These CD4 T-cells are heavily invested in scavenging viri-infected cells and effective to help fight off HPV and remove warts.

DOSAGE

Adult: 25-30 drops diluted in half cup of water two times a day (Morning and Evening).

Children: 15 drops diluted in half cup of water two times a day (Morning and Evening).



Angel Gloss

Restore beauty naturally

Cream

INDICATIONS

- Anti-blemish fairness cream for acne, pimples, blackheads and skin pigmentation.

INGREDIENTS

Berberis aquifolium, Hydrastis canadensis, Ledum palustre

You want to present the best face possible to the world. To many people, a bright, glowing complexion often means health and happiness. When your complexion looks dull and ashen, however, the face you present might suggest that you're tired, worn down, ill or even older than you are.

Turn away from the mirror and find out what you can do to restore a healthy, more youthful glow to your face. Angel gloss is a natural care for skin blemishes and dull complexion.

BENEFITS

- Revives the skin from sun damage resulting in flawless complexion
- Controls excessive oil production in skin
- Cleanse and heals skin pores
- Regulates skin perspiration and removes inhabiting skin damaging bacteria

DIRECTIONS

Wash the face and apply *Angel Gloss* all over face, gently massage two times a day.



Rhomo Oil

Efficient in sport
efficient in life

Oil

INDICATIONS

- Muscular pain in back, joints and extremities
- Painful swelling of joints and knees
- Rheumatism, sprain and strains especially due to cold weather

INGREDIENTS

Bryonia alba, Menthol, Camphor, *Rhus toxicodendron*, *Symphytum officinale*, *Terebinthinae oleum*, Thymol,

Joints form the connections between bones. They provide support and help to move. Any damage to the joints from disease or injury can interfere with movement and cause a lot of pain. Short-term pain and swelling in the joints can affect quality of life. Joint pain can range from mildly irritating to debilitating.

SYMPTOMS

- Pain
- Swelling
- Stiffness
- Warmth in joints

Rhomo Oil is a roll-on topical treatment for joint swelling. It is highly effective for supporting body relief. Rhomo Oil helps in hand pain, shoulder pain, hip pain, leg pain, foot pain, ankle pain.

MECHANISM OF ACTION

- Rhomo Oil works as counter irritant.
- Rhomo Oil has powerful antioxidant and anti-inflammatory.
- Rhomo Oil acts on fibrous tissue especially joints, tendons, sheaths etc., thus provides relief from pain & stiffness.
- Rhomo Oil readily absorbed in the skin produces a cool sensation and acts as a mild local anesthetic.

DOSAGE

Adults and children 6 years of age and older:

Apply generously to affected area, massage into painful area until thoroughly absorbed into skin repeat if necessary, but not more than 3 to 4 times daily.



Anacosinum

Be FLU safe



INDICATIONS

- Reduces the severity and shortens the duration of Flu.

INGREDIENTS

Aconite napellus, Anas barbariae, Asclepias vincetoxicum, Belladonna, Cuprum metallicum, Echinacea angustifolia, Influenzinum

The flu is a contagious respiratory illness caused by influenza viruses that infect the nose, throat, and lungs. It can cause mild to severe illness, and at times can lead to death.

SYMPTOMS

- Fever
- Chills
- Headache
- Sore throat

Anacosinum is a natural homeopathic medicine which decreases the severity and duration of flu symptoms, such as fever, chills, bodyaches and pain.

MECHANISM OF ACTION

- Anacosinum stimulates the cell-mediated immune response (mainly T cytotoxic and Natural Killer lymphocytes) aimed at the cellular lysis.
- It activates the Immune System to induce a cell-mediated response (macrophages, T cytotoxic lymphocytes and Natural Killer cells) that is specific against the cells infected by the influenza and parainfluenza virus.
- It has an anti-inflammatory and antiseptic action, can slow down the septic development of the pathology and activate the restoration mechanisms of the tissues.

DOSAGE

Adults & Children above 2 years

Prophylactic: 1 vial per week during the flu season

Symptomatic: 3 vial per day at an interval of 6 hours each

Children below two years: Half the adult dose



Arnica

Natural pain relief gel

Gel

INDICATIONS:

For soft tissue trauma injuries, musculoskeletal pain and stiffness, swelling, bruising or pain in body due to over-exertion. Promotes early healing in bruise, aches, and sprains.

INGREDIENTS

Arnica Montana Q HPUS 10%

There's nothing quite like starting your day off with an aching back, sprained neck or leg that are practically screaming in pain. Acute pain or muscle stiffness interrupts your daily routine leaving you in an unhappy mood.

SYMPTOMS:

- Everyday acute muscle pain or stiffness due to minor injuries, overexertion or falls
- Bruising
- Pain in joints

Arnica Gel is a non-greasy natural formula for effective pain relief. This cooling gel absorbs quickly and is great for relief following an injury or general overexertion.

MECHANISM OF ACTION:

- The sesquiterpenoid lactones of arnica are the active constituents which produce anti-inflammatory and analgesic effects by preventing transcription nuclear factor (NF)-kappaB activation. NF-κB, a central mediator of the human immune response regulates the transcription of various inflammatory cytokines such as IL-1, -2, -6 and -8 and TNF-α.

DOSAGE:

Apply externally twice daily, gently massaging the gel on appropriate area.



ArniGo

Advanced pain relief formula



INDICATIONS:

Relieves mild to moderate soft tissue trauma, various inflammatory conditions of musculoskeletal pain, and stiffness or soreness, joint pain, swelling, bruising and sprains.

INGREDIENTS

Arnica montana, Calendula officinalis, Cinnamomum camphora, Hamamelis virginiana, Hypericum perforatum, Rhus toxicodendron, Symphytum officinale

Almost everyone has sore, aching muscle now and then. Muscle pain or body stiffness may result from over exercise, odd working hours at office, prolonged sitting, doing new physical activity for first time etc.

SYMPTOMS:

- Muscle pain – Strain or Sprain
- Joint stiffness
- Decreased range of motion
- Backache

ArniGo is advanced pain relief formula composed of powerful natural resources. The potent ingredients of this formula are involved in wound-healing, analgesic, and anti-inflammatory actions. The combination is effective for the treatment of soft tissue trauma, inflammatory conditions, musculoskeletal pains and bruising.

MECHANISM OF ACTION:

- ArniGo contains sesquiterpenoid lactones, flavonoids and tannins which are responsible for anti-inflammatory and analgesic effects. It inhibits proinflammatory genes like cyclooxygenase-2, interleukin 6, and inducible nitric oxide synthase (iNOS).
- Flavonoids and saponins in ArniGo prevents releasing of harmful and histamine enzymes that cause sensitivity and inflammation and heal the redness and pain.
- ArniGo has strong anti-inflammatory, antioxidant and healing properties.

DOSAGE:

Apply externally twice daily, gently massaging the gel on appropriate area.



Cold Care

Natural medicine
for kids cold



INDICATIONS:

- Runny nose
- Chest congestion
- Cough & Sneeze

INGREDIENTS

Allium Cepa, Belladonna, Gelsemium Sempervirens, Kalium Bichromicum, Pulsatilla, Sabadilla

Your baby's immune system will need time to mature. For newborns, a common cold can quickly develop into croup, pneumonia or another serious illness.

SYMPTOMS:

- Congested or runny nose
- Nasal discharge
- Irritability
- Difficulty sleeping
- Cold care drops

Cold Care is a natural way to treat your babies cough & associated symptoms

MECHANISM OF ACTION:

- Cold care cuts down mucus production and clear respiratory passages of excess phlegm
- Cold care reduces respiratory illness
- Cold care has soothing effect on the mucus membranes of the nose and tear glands
- Cold care possesses anti-bacterial & anti-tussive properties which provides relief in condition of cold
- Cold care boosts up the immune system

DOSAGE:

Children 3 months of age and older: Snap off one single-use dose. Twist to open. Squeeze entire contents into mouth.

Administer one liquid unit-dose at the onset of symptoms, 3 to 6 times a day. Reduce with improvement.

Keep the remaining unit-doses in the aluminum pouch.



Colic Care

Natural medicine
for colicky baby



INDICATIONS:

- Relieves colic & gas pain
- Relieves nausea & burping
- Relieves agitation & irritability

INGREDIENTS

Dioscorea villosa, Chamomilla matricaria, Colocynthis vulgaris

Every parent wishes to see their little bundle of joy always happy and smiling.

Colic causes repeated bouts of excessive crying and discomfort in infants. Starts most commonly at around 6 weeks of age.

SYMPTOMS:

- Intense crying. Occurs mostly in evening, for more than 3 hours a day, atleast 3 days a week and for atleast 3 weeks.
- Legs pulled up to stomach, flushed face, clenched hands and wrinkled brows.
- Irregular & interrupted sleep with episodes of crying
- Restlessness
- Passing gas or bowel movement

Colic Care helps bring relief to your baby from this distressing colic and get back the loving smile, the natural way.

MECHANISM OF ACTION:

- Colic care helps in sedating excited or excessive nerve force (which causes colic pain) to normal.
- Colic care soothes nerves of the lower part of the abdomen.
- Colic care possesses antispasmodic and anti-inflammatory properties which provides relief in colic condition.

DOSAGE:

Children 1-12 months: Snap off one single-use dose. Twist to open. Squeeze entire contents into mouth. Administer one liquid unit-dose at the onset of symptoms, 3 to 6 times a day. Reduce with improvement. Keep the remaining unit-doses in the aluminum pouch.



Kiddy Calm

Calm your
kids naturally



INDICATIONS:

- Restlessness
- Agitation & nervousness

INGREDIENTS

Chamomilla, Coffea Cruda, Ignatia Amara, Lycopodium, Natrum Muriaticum, Platinum Metallicum, Pulsatilla, Sulphur

Young children who cannot talk yet will let you know when something is wrong by acting fussy or irritable. If your child is fussier than usual, it could be a sign that something is wrong.

SYMPTOMS:

- Lack of sleep
- Frustration
- Fight with sibling

Kiddy Calm is a natural way to calm your baby whenever they are in need of it.

MECHANISM OF ACTION:

- Kiddy calm helps in falling asleep by promoting relaxation and inducing a sleep
- Kiddy Calm improves the mood and lowers anxiety
- Kiddy Calm has flavonoids and apigenins that calms the mind
- Kiddy Calm helps to calm the racing thoughts and restlessness that often come along with not being able to fall asleep

DOSAGE:

Children 3 months and above of age: Snap off one single-use dose Twist to open squeeze entire contents into mouth.

Administer one liquid unit-dose at the onset of symptoms, 3 to 6 times a day. Reduce with improvement.

Keep the remaining unit-doses in the aluminum pouch.



Teeth Easy

For kids teeth and
gum pain



INDICATIONS:

- Teething
- Dentition
- Toothache
- Sleeplessness

INGREDIENTS

Calcarea Phosphorica, Chamomilla, Coffea Cruda, Belladonna

Teething is hard work and unfortunately it is something all babies must go through. While teeth can erupt this early the most **common age is 6 to 9 months**. Pain from teething likely only comes when the teeth are breaking through the gums and can be seen or felt.

SYMPTOMS:

- Drooling
- Chewing Relentlessly
- Irritability or fussiness
- Swelled or Sensitive Gums

Teeth Easy brings you a natural teething remedy for a pain free and smooth dentition. It relieves pain, restlessness, irritability and diarrhoea due to teething.

MECHANISM OF ACTION:

- Calcarea Phosphorica present in Teeth Easy helps in Teething and Dentition in babies
- Chamomilla is a popular remedy for teething pain which helps to relax pain and soothes irritability
- Coffea Cruda helps in sleeplessness and toothache
- Belladonna helps in teething discomfort & redness

DOSAGE:

Children of 3 month of age & older: Snap off one single-use dose. Twist to open. Squeeze entire content into mouth.

Administer one liquid unit-dose at the onset of symptoms, 3 to 6 times a day. Reduce with improvement.





Bhargava

E-mail: export@bhargavaphytofab.com

Website: www.bhargavaphytofab.com

www.facebook.com/bhargavaphytofab

